

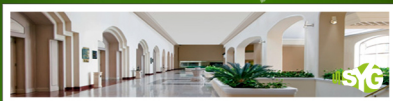
Wherever you need light



is the solution

Flora Light - Complete kit for plant lighting
Lumi Led Light - Extra low-profile LED luminaire
Lumi Light - Universal luminaire with comfort light

FLORA LIGHT



FLORA LIGHT meets all the requirements of modern plant lighting. High-quality materials, stylish design, a balanced spectrum of light and excellent energy efficiency are the outstanding features of this luminaire.

Product Benefits



Optimal light spectrum that plants need for photosynthesis, and therefore for healthy and natural growth.

High-quality white aluminium housing (RAL 9016).

4 available versions, with 35 W and 70 W, pendulum and fix mounted.

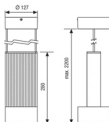
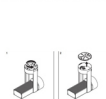
Equipped with lamp HCI-PAR30 830 WDL PB 30, color temperature 3,000 K.

System guarantee with HCI-PAR30 830 and POWERTRONIC PTi for higher luminaire efficiency and higher luminous flux.

Product Description

- **Wattage:** 35 W or 70 W
- **Colour:** white
- **Length:** 326 mm (p-version) / 338 mm (f-version)
- **Diameter:** 126 mm

Version	Flora Light P 35 W	Flora Light P 35 W	Flora Light F 70 W	Flora Light F 70 W
Body material	Aluminium			
Color of the luminaire (RAL)	White (RAL 9016)			
Adjustable	No	Yes (± 90°)	No	Yes (± 90°)
Length [mm]	326		338	
Diameter [mm]	126			
Type of connection	Fixed connection (FIX/MINIAL)			
Mounting type	Pendulum	Fixed-mounted	Pendulum	Fixed-mounted
Net weight (kg)	1.030	1.030	1.040	1.040



LUMI LED LIGHT

Extra flat, glorious bright, most energy efficient.

LUMI LED LIGHT with 6 premium LED is impressive for its uniquely flat design as well as its excellent, UV free illumination of the spotlighted area. LUMI LED LIGHT sets new standards in energy efficiency.



Product Benefits

LED light module with 6 OSOLON LED

High-value silver aluminum profile

High lumen output

White-glossy ECG plastic housing (RAL 9016)

Luminaire can be operated with separate ECG

Integrated on/off switch

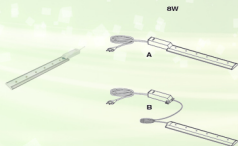
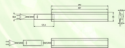
Ready to install with 1,6 m power cable / Euro plug

Product Description

- Wattage: 8 W
- Beam angle: 80°
- Length: 343 mm
- Width: 55 mm
- Height: 24 mm
- Thickness: 10mm
- IP20

Applications

- Cupboards
- Shelves
- Glass cabinets



LUMI LIGHT

LUMI LIGHT is a general-purpose batten luminaire with all the benefits of electronic operation and a free-burning lamp for maximum luminous flux.



Product Benefits

For fixed connection, with central, asymmetrical and side cable insertion.

Integrated switch.

Equipped with LUMI LIGHT 827 lamp.



Product Description

- lamp wattage: 10, 18, 30, 36, 58 W
- colour: white
- length: 501, 621, 926, 1231, 1531 mm
- width: 30 mm
- height: 50 mm



Aluminum extrusion, directional light source, perfect illumination in the kitchen.



All the advantages at a glance:

- Slim batten luminaires, unobtrusive in use
- Quick start with no flickering
- Flicker-free light
- Low heat output
- Low-voltage operation
- Low weight
- Maximum flow of light from open lamp
- Timeless design

