

THREE-PHASE ELECTRONIC METER

3.E3L

The electronic residential meter E3L is an electricity meter for measuring of active energy in single or two-tariff designs for billing purposes meant for two or four wire networks.

TECHNICAL DATA

Rated values:

- Voltage, Un: 3x230/400 V (1x230 V)
- Current: 0.25 - 5(60 A)
- Frequency, fn: 50 Hz
- Frequency range: 45...65 Hz

Accuracy of active energy:

- class (A, B), according to EN 50470-3

Temperature range:

- Operating: -25...+55°C
- Limit: -40...+70°C
- Transport and storage: -40...+70°C

Mechanical and constructive characteristics:

- Dimensions: 204(226)x172x74 mm
- Display: LCD custom design 56x18 mm, according to Lastenheft EDL "Elektronische Haushaltszähler Funktionale Merkmale und Protokolle" Version 1.0
- Display control: optical button according to Lastenheft EDL "Elektronische Haushaltszähler Funktionale Merkmale und Protokolle" Version 1.0
- Tariff control: - terminals (Figure 3)
- Degree of protection: - housing IP-51
- Test device: - LED infrared (10000 imp/kWh)
- Data interfaces: - optical data interface on the frontside according to DIN EN 62056-21
- RJ10 data interface in the terminal block

Operation:

- Active energy „+A” and 2 tariffs with 100mWh resolution.
- Display with two rows, according to figure 1.
 1. the upper row displays the energy index (6 integers, unit kWh, and OBIS codes)
 2. the lower row is the INFO row

Optical button for display control

Symbols displayed:

- active energy flow sign +A with (positive) or -A with (negative).
- rotating disc (four lines are apparent on the LCD starting from left to right).
- markers of the voltage presence on each phase: L1, L2, L3.
- marker of the current tariff (underline the corresponding OBIS code on LCD).



- communication sign
- error detection („FF”)

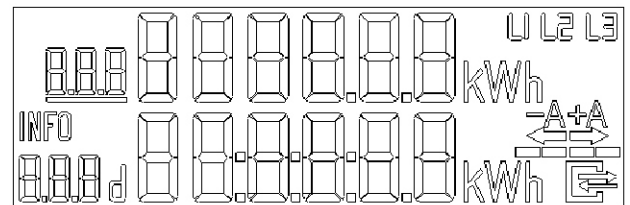


Figure 1

- Communication:
 - through the optical interface transmits a telegram - SML v1.03 protocol, PUSH variant.
 - through the RJ10 bidirectional interface - SML v1.03 protocol meter functions are according to Lastenheft EDL „Elektronische Haushaltszähler” Funktionale Merkmale und Protokolle Version 1.0
- EDL40 functionalities :
 - system time which can be synchronized through SML command through the RJ10 interface
 - signature, according to Lastenheft EDL „Elektronische Haushaltszähler” Funktionale Merkmale und Protokolle Version 1.0

OVERALL DRAWINGS

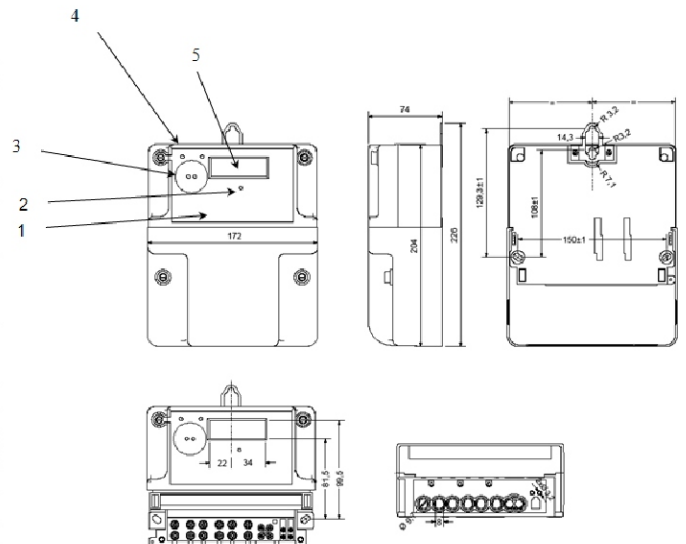


Figure 2

- (1) - Printed label according to DIN EN 50470-1
- (2) - Optical button for display command
- (3) - Optical Interface according to EN 62056-21 specifications, mode D (unidirectional)
- (4) - Test IR LED: meter constant imp/kWh
- (5) - Custom design LCD according to Lastenheft EDL Version 1.0

CONNECTIONS DIAGRAM

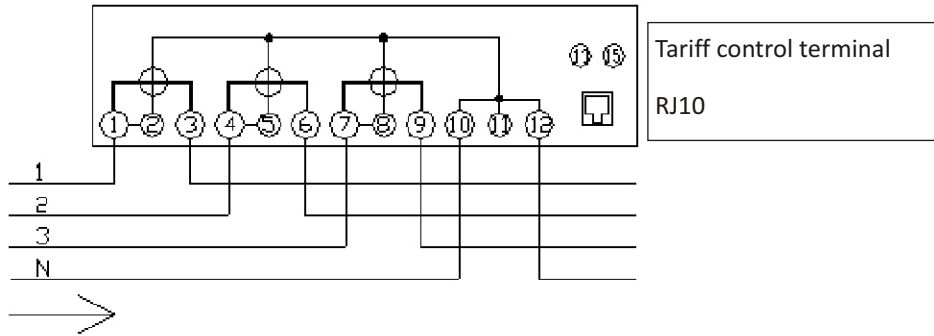


Figure 3

